

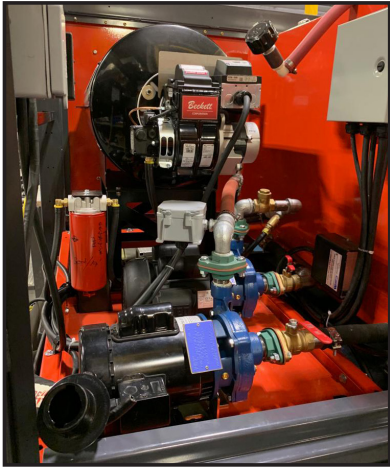
# HEAT KING

## HK 300 MOBILE GLYCOL HEATING SYSTEM



### FEATURES

- 4-700FT HOSES
- THAW UP TO 5,600 FT<sup>2</sup>
- CURE UP TO 11,200 FT<sup>2</sup>
- TEMPORARY HEAT UP TO 12,000 FT<sup>2</sup>
- UP TO 120 HRS RUN TIME
- CSA/UL CERTIFIED
- PLC CONTROLLED SYSTEM
- BI-DIRECTIONAL POWERED REEL WITH FREEWHEEL FEATURE
- ON BOARD AIR COMPRESSOR FOR EVACUATING HOSES

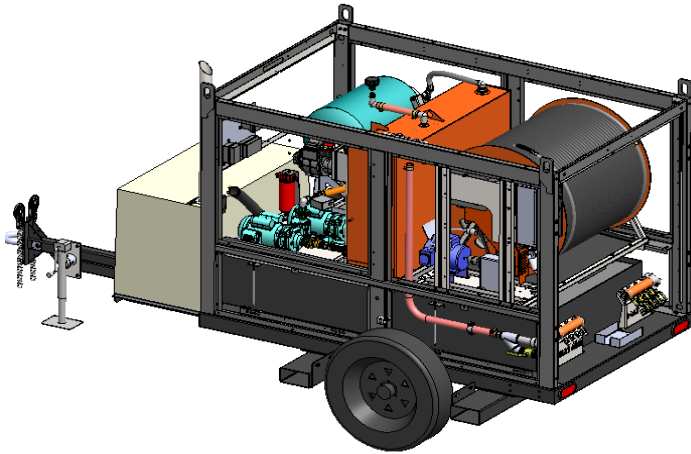


## DOUBLE LOOP TECHNOLOGY

BY USING SHORTER HOSES, MORE FLUID, AND HIGHER EFFICIENCY PUMPS WITH INCREASED FLOW, THE HEAT KING PROVIDES MORE CONSISTENT TEMPERATURE TO THE FIELD FOR BETTER CONCRETE CURING AND GROUND THAWING RESULTS.



## HEAT KING ADVANTAGE



- GLYCOL GETS UP TO OPERATING TEMPERATURE FASTER THAN COMPETITORS (DESIGNATED CIRCULATION PUMP PULLS FROM THE RESERVOIR AND DOESN'T HAVE TO PUSH COLD GLYCOL THROUGH THE FIELD HOSES)
- GLYCOL CAN BE BLOWN OUT OF THE FIELD HOSES AND STORED IN THE RESERVOIR, ELIMINATING THE NEED TO STORE IT IN A CONTAINER. CONVENIENT WHEN ABANDONING THE HOSES IN CONCRETE OR FOR SPACE HEATING SET-UPS & TAKE DOWNS
- TYING INTO EXISTING MANIFOLDS SUCH AS IN-FLOOR HEATING
- OIL & GAS APPLICATIONS SUCH AS TANK HEATING & HAVING THE ABILITY TO RETRIEVE THE GLYCOL FROM STEAM COILS
- GLYCOL CAN BE LEFT IN THE FIELD HOSES OR THE RESERVOIR

## HK300 SPECIFICATIONS

<ul style="list-style-type: none"> <li>• Hose</li> <li>• Hose</li> <li>• Supply Manifold</li> <li>• Return Manifold</li> <li>• Ground Thawing Capacity</li> <li>• Concrete Curing Capacity</li> <li>• Temporary Heating Capacity</li> <li>• Field Pump</li> <li>• Circulating Pump</li> <li>• Fuel Tank</li> <li>• Run Time</li> <li>• Fuel Consumption</li> <li>• Flo Indicator</li> </ul>	<p>4 - 700 ft Field Hoses (5/8" Hose)                      Unspool with one person                      4 - 1/2" quick connect &amp; 1 - 1 1/4" Camlock                      4 - 1/2" quick connect &amp; 1 - 1 1/4" Camlock                      up to 5,600 ft<sup>2</sup>                      up to 11,200 ft<sup>2</sup>                      12,000 ft<sup>2</sup> (Varies with R-Value)                      1 Hp Centrifugal                      1/2 Hp Centrifugal                      192 US GAL                      Up to 120 Hours                      HK 300 = 2.24 GPH, Genset = .55 GPH                      Ensures proper operation</p>	<ul style="list-style-type: none"> <li>• Interior Lights</li> <li>• Mud Tray</li> <li>• Heater Capacity Diesel</li> <li>• Glycol Tank</li> <li>• Electrical Requirements</li> <li>• Generator (Optional)</li> <li>• Axle</li> <li>• Hitch</li> <li>• Dimensions</li> <li>• Weight (Fuel Empty/Full)</li> <li>• Burner</li> </ul>	<p>Standard for ease of night operation                      Added under the reel to catch mud debris                      311,000 BTU/H Heating Fuel Input                      96 US GAL                      2 - 120V AC 20A Circuits                      1 - 7 kw or 1- 6 kw MQ                      1 - 7,000lb Torsion Axle, Electric Brakes                      2 5/16" Ball (Pintle also available)                      14'x86"x83"                      5,665 lbs / 7,009 lbs                      Beckett Burner</p>
---	--	--	---